

PH4.FRM

PH4.FRM FIRST RESPONDER MOLLE TACTICAL



- Available in Ballistic, Spike, and Multi-Threat soft armor packages
- Top-loading front and rear 10x12" plate pockets
- Construction utilizes 1000 denier Cordura nylon with urethane/water-repellent coating for durability
- Features 360 degrees of 2" reflective taping and MOLLE attachment system
- MOLLE cummerbund is completely adjustable to fit a wider range of sizes (accepts optional soft armor panels)
- Front and rear 4x11" loop for ID attachment (IDs sold separately)
- Rear drag strap for emergency extraction
- Padded shoulders for comfort and weight distribution
- Dual mic tabs below shoulders and 2" reflective taping added for extra visibility
- One-size-fits all design with two carrier length options and three cummerbund length options
- Carrier Length Options:
Regular (14" front/16" rear) and Long (16" front/18" rear)
- Cummerbund Length Options: Short (24-36" waist), Regular (36-58" waist) and Long (48-70" waist)

FEATURES



BACK



SIDE



REAR DRAG STRAP



PADDLED SHOULDERS

COLORS



BLACK



ROYAL
BLUE



RED



COYOTE



TAN 499

REFLECTIVE



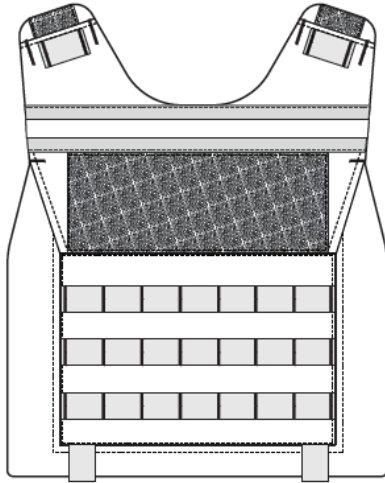
YELLOW



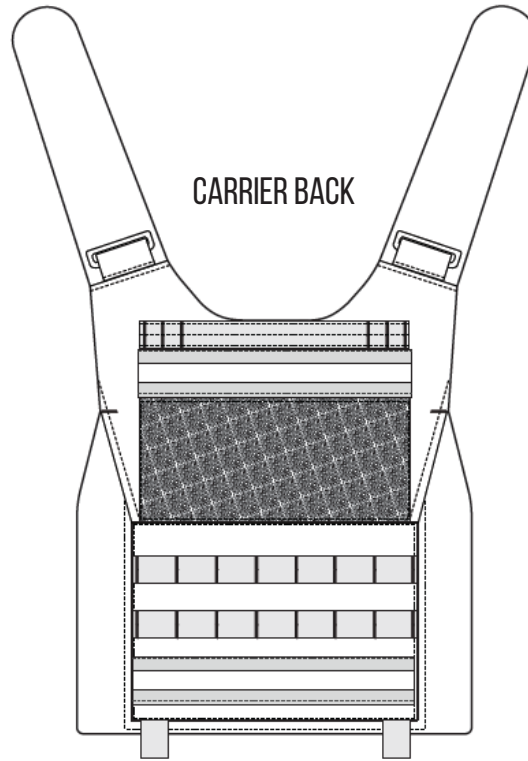
ORANGE

PRODUCT COMPONENTS

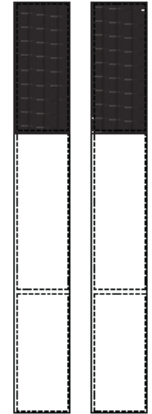
CARRIER FRONT



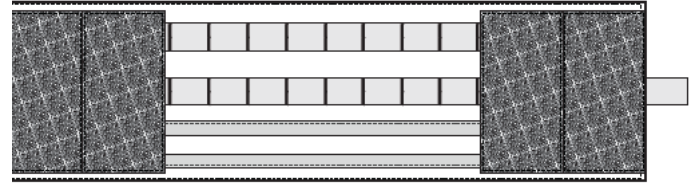
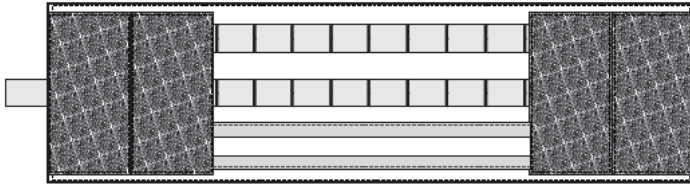
CARRIER BACK



SHOULDER STRAPS



CUMMERBUNDS



COLORWAYS

Carrier	Black	Royal Blue	Red	Coyote	Tan 499	Black	Royal Blue	Red	Coyote	Tan 499
Trim	Black	Black	Black	Coyote	Tan 499	Black	Black	Black	Coyote	Tan 499
MOLLE	Black	Black	Black	Coyote	Tan 499	Black	Black	Black	Coyote	Tan 499
Reflective Swatch										
Carrier Swatch										